



ProPEL Indy Study Update

Lawrence Common Council
December 2, 2024



Agenda

- ProPEL Indy Overview
- Visioning Phase Recap
 - Data Driven, Fueled by Feedback
- Draft Purpose and Need Report
- Community Goals
- Next Steps



PROPEL

Smarter Transportation.
Stronger Communities.

INDY



ProPEL Indy Overview

ProPEL Indy, is a 2-year transportation study with a unique opportunity for residents, neighborhoods, businesses, and commuters to envision the future of I-65 and I-70 in Indianapolis.

Study Schedule

WE ARE HERE



ProPEL Indy Next 20 years of investment in our interstates

Public Input collected and considered throughout the study process



Visioning Phase

Data driven.
Fueled by feedback.

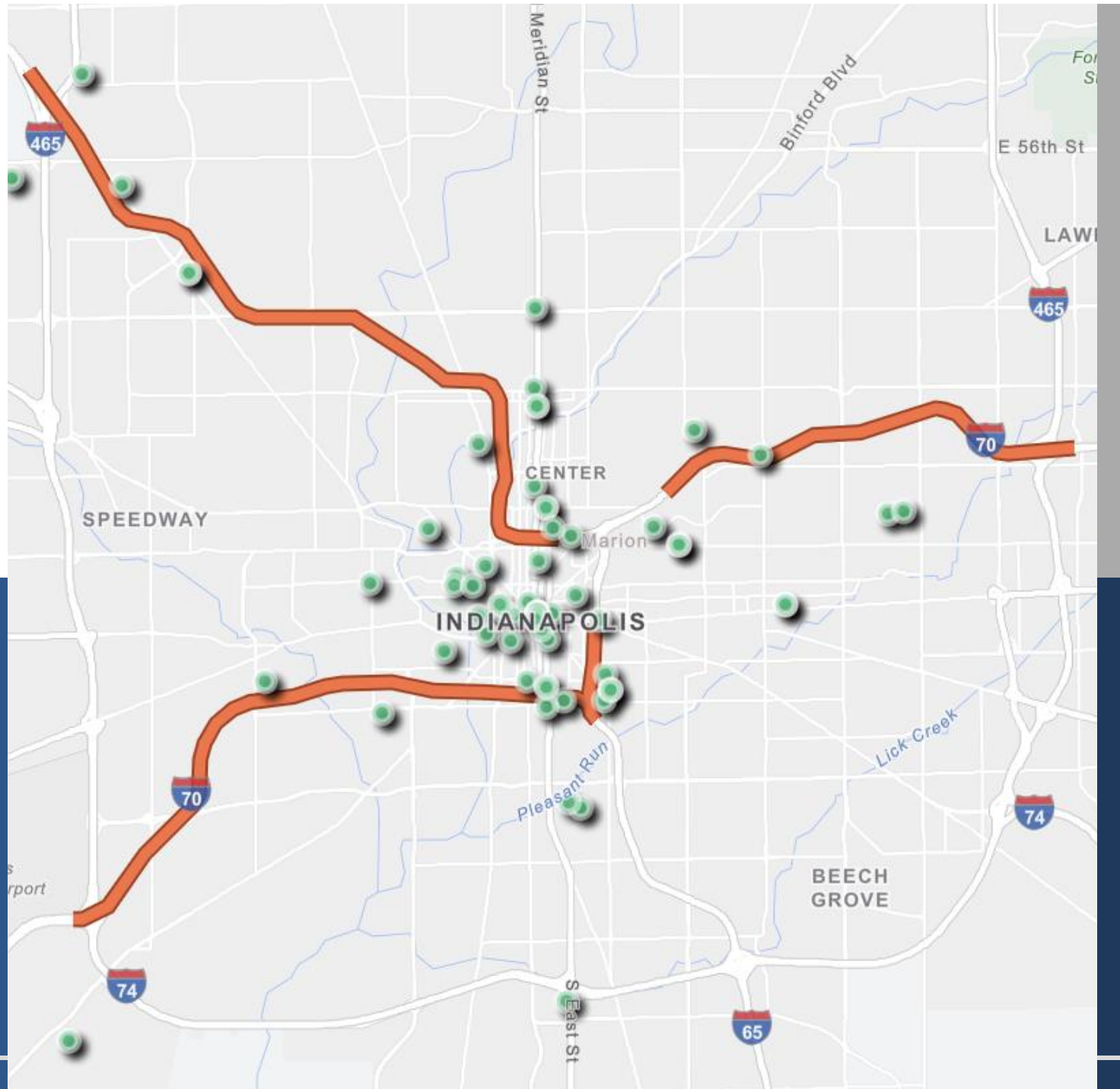


Visioning Phase

ProPEL Indy has spent the last year asking for the public's ideas about the future of I-65 and I-70 within the I-465 loop.

Community Engagement

ProPEL Indy Engagement Events



1,104

Public Comments



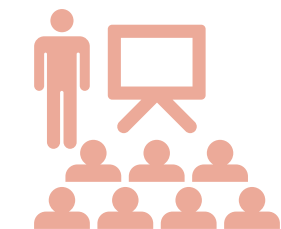
620

Stakeholders



45

Committee Members



61

Engagement Events

As of 4/30/24

Study Pillars

The study team identified key themes within the content of the public comments and aligned them with the study's four pillars.

**QUALITY OF
LIFE AND
LIVABILITY**

**ECONOMIC
GROWTH &
OPPORTUNITY**

**TRANSPORTATION
AND MOBILITY**

EQUITY

What We Heard

18 Key Themes were identified by the study team, they include:

This panel, titled 'QUALITY OF LIFE AND LIVABILITY', features four key themes: 'Placemaking and Public Spaces' (orange), 'Health and Safety' (green), 'Wayfinding and Signage' (pink), and 'Community Development' (blue).

PROPEL INDY Smarter Transportation. Stronger Communities. **QUALITY OF LIFE AND LIVABILITY**

This panel, titled 'ECONOMIC GROWTH', features three key themes: 'Neighborhood Revitalization' (green), 'Retail and Commercial Considerations' (orange), and 'New Development Opportunities' (pink).

PROPEL INDY Smarter Transportation. Stronger Communities. **ECONOMIC GROWTH**

This panel, titled 'TRANSPORTATION AND MOBILITY', features nine key themes: 'Connectivity' (green), 'Roadway Design' (orange), 'Design Alternative / Solution' (blue), 'Pedestrian and Bike' (orange), 'Public Transit' (pink), 'Lane Management Strategies' (green), 'Traffic Safety' (pink), and 'Technology' (orange).

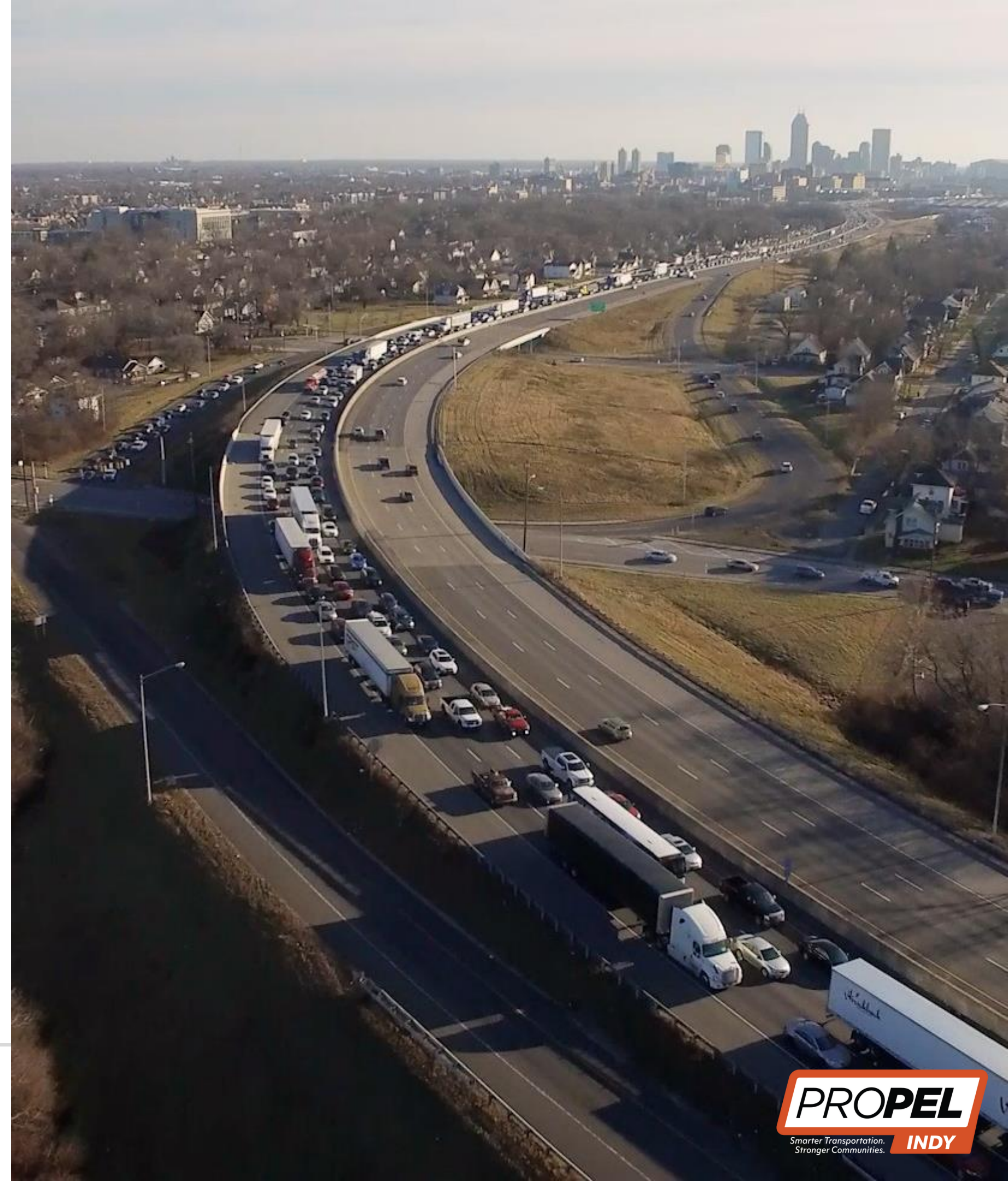
PROPEL INDY Smarter Transportation. Stronger Communities. **TRANSPORTATION AND MOBILITY**

This panel, titled 'EQUITY', features three key themes: 'Climate Resilience / Sustainability' (orange), 'Public Involvement' (blue), and 'Neighborhood Impacts' (pink).

PROPEL INDY Smarter Transportation. Stronger Communities. **EQUITY**

Data driven, fueled by feedback.

- Bridge and Pavement Conditions
- Crash Data and Roadway Operations
- Current and Projected Traffic Volumes
- Previous Studies & Environmental Constraints



PROPEL

Smarter Transportation.
Stronger Communities.

INDY

Draft Purpose and Need Report



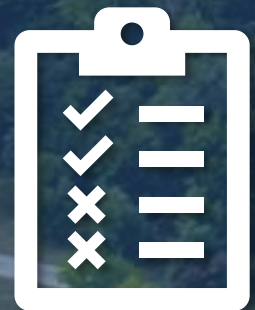
⋮ Purpose & Need



Identifies transportation issues or **needs** within the study area.



States the desired outcomes or **purpose** of completing a project.



Establishes a baseline for the evaluation of proposed solutions or **alternatives**.



Purpose and Need

ProPEL Indy used data alongside the public's feedback to define the transportation issues, opportunities, and desired outcomes in the study area.

Transportation Issues

The study team identified the following transportation issues in the study area.



**Aging Bridge
and Pavement
Conditions**



**Roadway
Safety**



**Roadway
Mobility**



**Limited
Multimodal &
Neighborhood
Connections**

Transportation Issues

The study team identified the following transportation issues in the study area.



Aging Bridge and Pavement Conditions

- There are bridge and pavement sections on the interstates that are nearing the end of their lifespan and require replacement or major rehabilitation.
- Five of 123 bridges and five of 11 pavement sections will require major work prior to 2030.

Transportation Issues

The study team identified the following transportation issues in the study area.



Roadway Safety

- From 2018 - 2022 there were over 10,500 crashes within the study area. 7% resulted in fatal or incapacitating injuries.
- Eight interstate segments and 22 intersections showed a crash frequency or severity greater than what is expected.

Transportation Issues

The study team identified the following transportation issues in the study area.

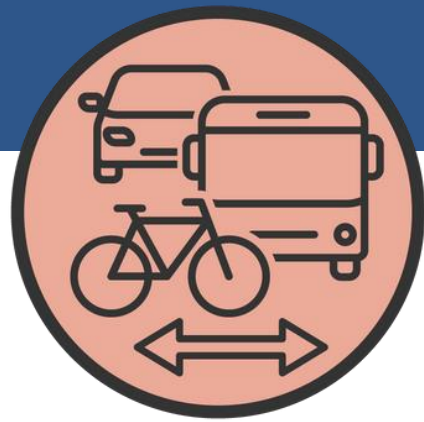


Roadway Mobility

- Decreased mobility on the interstates due to traffic congestion. This is projected to worsen over time.
- Operational issues caused by geometric deficiencies in the roadway design, such as weaving segments and left side entrance ramps, also contribute to decreased mobility.

Transportation Issues

The study team identified the following transportation issues in the study area.



Limited Multimodal & Neighborhood Connections

- There are gaps in the pedestrian/bicycle infrastructure across and near the interstates.
- Approximately 100 street connections were lost during the construction of the interstates. Or when connections across the interstates were implemented, adequate accommodations for non-motorized traffic were not provided.

● The purpose of ProPEL Indy is to identify potential solutions to:

● Improve aging bridges and pavement

● Improve safety along and at intersections near the interstates by reducing the frequency and/or severity of crashes

● Reduce congestion and improve mobility by addressing operational and geometric deficiencies

● Improve multimodal connectivity across and near the interstates



Community Goals



Community Goals

Quality of Life & Livability

Identify community enhancements that improve the quality of life of adjacent neighborhoods.

Avoid and/or minimize impacts to the natural and human environment.

Economic Growth & Opportunity

Provide transportation infrastructure to support local, regional, and statewide economic development goals.

Ensure efficient and reliable transportation to support the visitor experience.

Transportation & Mobility

Support emerging technologies and related infrastructure.

Consider INDOT's Carbon Reduction Strategy, National Electric Vehicle Infrastructure Plan, and future Resilience Plan during alternative development.

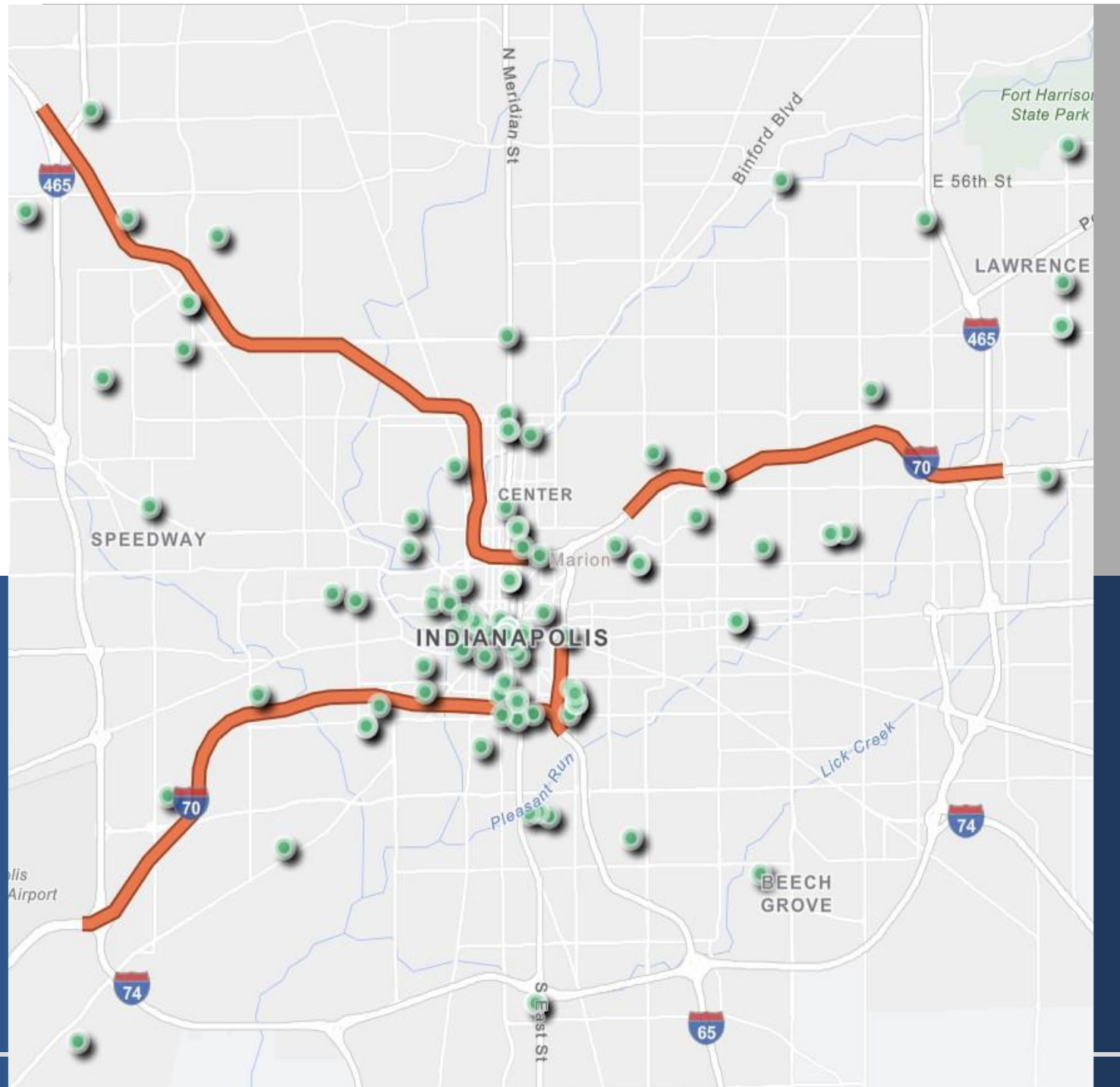
Equity

Actively engage stakeholders who use, cross, work, or live near the interstates throughout the study.

Provide accessible, fair, safe, affordable, reliable, and sustainable mobility along and across the interstates for community members based on identified needs and input received.

Community Engagement

ProPEL Indy Engagement Events



1,414

Public Comments



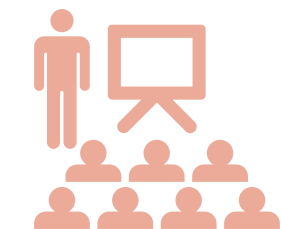
789

Stakeholders



45

Committee Members



110

Engagement Events

As of 10/31/2024



Next Steps

- We anticipate a final Purpose & Need Report will be published to our website later this year.
- Continued outreach and engagement in the community throughout the study.
- Draft Universe of Concepts Report

Questions?

Share your feedback at
ProPELIndy.com



Thank you!

Share your feedback at
ProPELIndy.com

